

# BTX

MINI BOOM TRUCK



## BTX 4100

MINI BOOM TRUCK

### FEATURES

- Heavy duty frame construction providing a stable platform.
- Reliable and proven power train components with integrated torque converter
- Four-wheel drive, articulated steer carrier
- Operator suspension seats come with seat belts
- Spring applied hydraulic release parking and emergency brakes on both axles
- Rear stabilizers
- Strobe light
- Auto greasing system

### ENGINE

Mercedes 904

### TRANSMISSION

Clark 20,000 series Power Shift Transmission

### AXLES

Dana 123

### TIRES

10:00 x 12 mine rated pneumatic tires

### ELECTRICAL

24 volt electrical system  
NEMA 4 compliant panels  
Control warning system



*BTX 5000 Series Shown in Picture*

**EQUIPMENT**

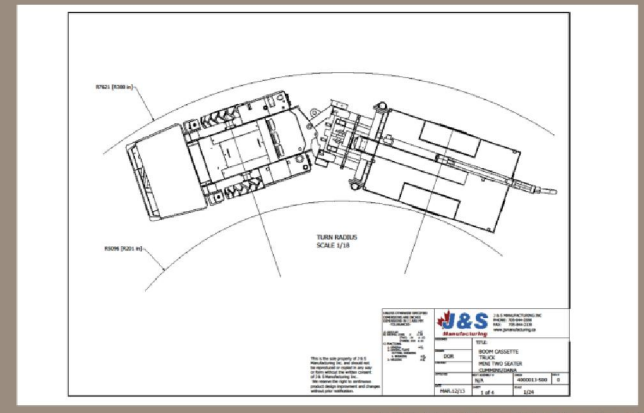
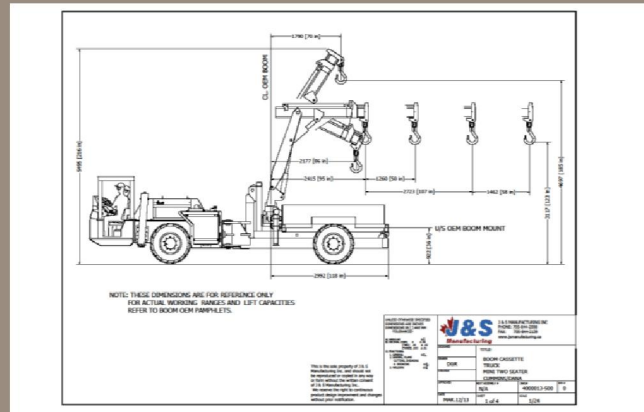
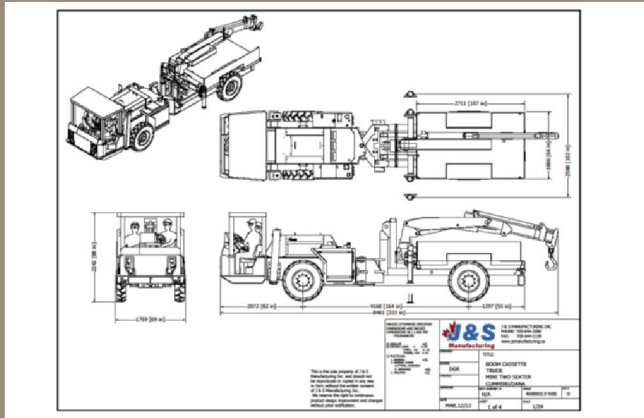
# BUILT TO PERFORM



[www.waldenequipment.ca](http://www.waldenequipment.ca)

# BTX

## MINI BOOM TRUCK



# BTX4100

## MINI BOOM TRUCK

### HYDRAULIC SYSTEM

- All hoses and fittings with SAE 37 deg
- JIC Aeroquip

### BOOM

- J&S Manufacturing Model 5BX, 3 Section Boom
- Min loading range of 2500 kg / Max loading range of 6000 kg

### EQUIPPED WITH

- Fire suppression system Ansul 4 nozzle
- ROPS/FOPS canopy

### AVAILABLE OPTIONS

- Enclosed cab with AC and heater
- Check Fire System. includes 8 nozzles and two 30lbs tank
- Wing filled or solid tires
- Boom extension for additional deck space
- Hiab boom

## EQUIPMENT

# BUILT TO PERFORM



[www.waldenequipment.ca](http://www.waldenequipment.ca)

