

AFX

ANFO LOADER



AFX5100

ANFO LOADER TRUCK

FEATURES

- Heavy duty frame construction providing a stable platform.
- Reliable and proven power train components with integrated torque converter
- Four-wheel drive, articulated steer carrier.
- Operator and passenger suspension seats – come with seat belts.
- Spring applied hydraulic release parking and emergency brakes on both axles.
- Front and rear stabilizers
- Amber strobe light
- BX 3 Section Boom

ENGINE

Mercedes 904

TRANSMISSION

Clark 20,000 Series Power Shift Transmission

AXLES

Dana

TIRES

12:00 x 20 mine rated pneumatic tires

ELECTRICAL

24 volt electrical system

Electric limit switch to prevent movement of the vehicle when boom is extended

EQUIPMENT

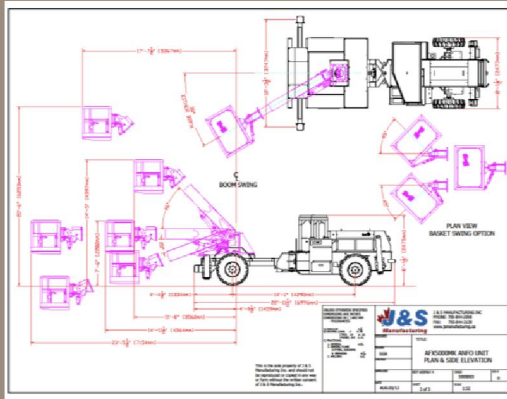
BUILT TO PERFORM



www.waldenequipment.ca

AFX

ANFO LOADER



AFX 5100

ANFO LOADER TRUCK

HYDRAULIC SYSTEM

All hoses and fittings with SAE 37 deg JIC Aeroquip

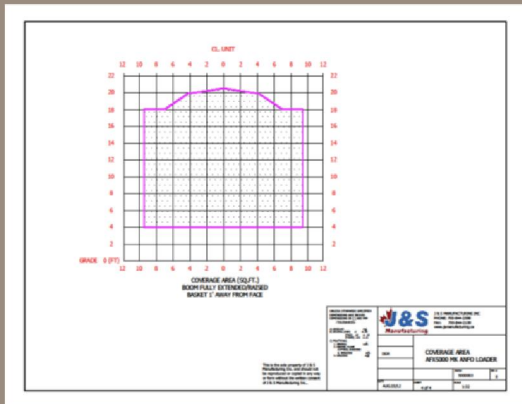
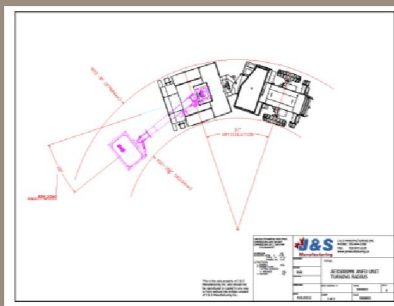
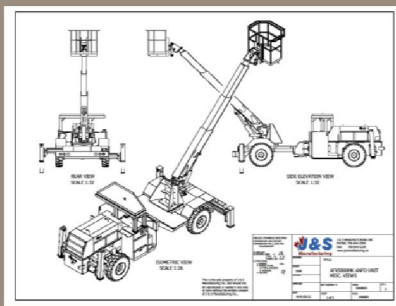
Selector valve to eliminate vehicle movement while Baskets is in use

EQUIPPED WITH

- ROPS/FOPS Canopy
- 250, 500, and 750 kg Anfo Loading Tank
- Stainless Steel Plumbing for ANFO System
- Air Compressor
- Intrinsically Safe Electrical Panels

AVAILABLE OPTIONS

- Mercedes 906 engine.
- Air conditioners and heaters for cabs
- Wing filled or solid tires
- Elec. / Hyd. power pack (reel only)
- Dual loading system
- 1000kg ANFO upgrade
- Fire suppression system 4 Nozzle
- Check fire system - 8 nozzles and two 30lbs tank
- Canopy over basket
- Hydraulic compressor
- Auto greasing system
- Enclosed cab with A/C
- Secondary ANFO transportation day boxes
- Secondary ANFO transportation day boxes



EQUIPMENT

BUILT TO PERFORM



www.waldenequipment.ca