

FLX

FUEL LUBE TRUCK



FLX5100

FUEL LUBE TRUCK

FEATURES

- Heavy duty frame construction providing a stable platform.
- Reliable and proven power train components with integrated torque converter
- Four-wheel drive, articulated steer carrier.
- Operator suspension seats
– come with seat belts.
- Spring applied hydraulic release parking and emergency brakes on both axles.
- Clear strobe light

ENGINE

Mercedes 906

TRANSMISSION

Clark 32,000 Series Power Shift Transmission

AXLES

Dana 113 Axles

TIRES

12:00 x 20 mine rated pneumatic tires

ELECTRICAL

24 volt electrical system

EQUIPMENT

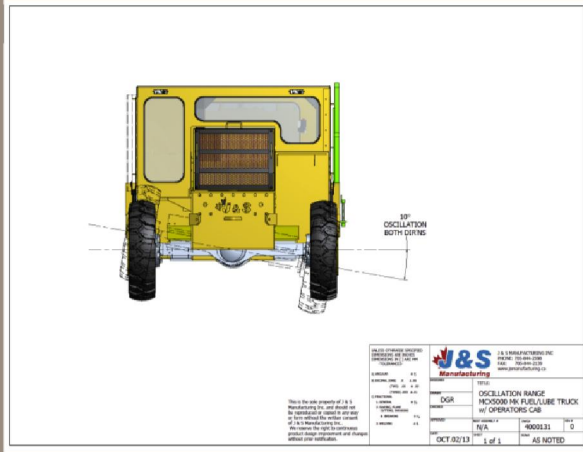
BUILT TO PERFORM



www.waldenequipment.ca

FLX

FUEL LUBE TRUCK



FLX 5100

FUEL LUBE TRUCK

HYDRAULIC SYSTEM

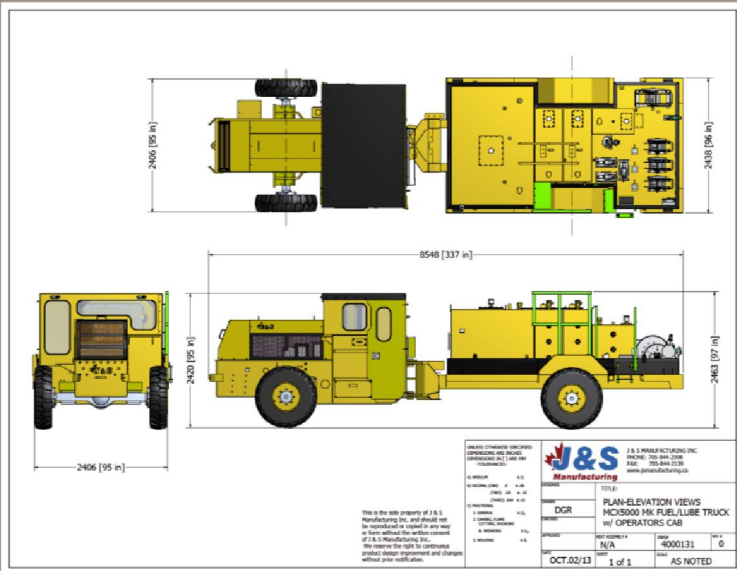
All hoses and fittings with SAE 37 deg JIC Aeroquip

EQUIPPED WITH

- Fire Suppression System Ansul 4 Nozzle
- ROPS/FOPS Canopy
- Linclon Auto Lube
- Atlas Copco LE20-10 Air Compressor
- Intrinsically Safe Electrical Panels

AVAILABLE OPTIONS

- Air conditioners and heaters for cabs
- Wing filled or Solid Tires
- Deutz, CAT, Cummings engines all available



EQUIPMENT BUILT TO PERFORM



www.waldenequipment.ca

