

SLX

SCISSOR LIFT TRUCK



SLX5100

SCISSOR LIFT TRUCK

FEATURES

- Heavy duty frame construction providing a stable platform.
- Reliable and proven power train components with integrated torque converter
- Four-wheel drive, articulated steer carrier.
- Operator and passenger suspension seats – come with seat belts.
- Spring applied hydraulic release parking and emergency brakes on both axles.
- Front and rear stabilizers
- Clear strobe light

ENGINE

Mercedes 904

TRANSMISSION

Clark 20,000 Series Power Shift Transmission

AXLES

Dana 113

TIRES

12:00 x 20 mine rated pneumatic tires

ELECTRICAL

24 volt electrical system

Electric limit switch to prevent movement of the vehicle when deck is extended.

EQUIPMENT

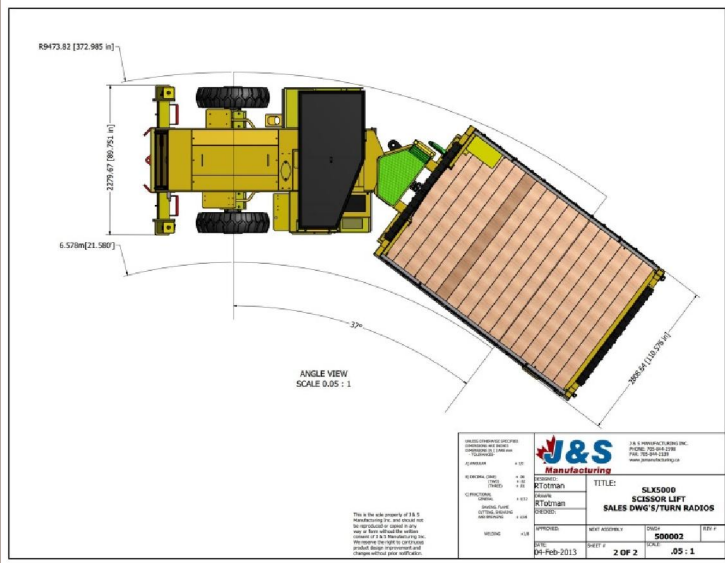
BUILT TO PERFORM



www.waldenequipment.ca

SLX

SCISSOR LIFT TRUCK



SLX5100

SCISSOR LIFT TRUCK

HYDRAULIC SYSTEM

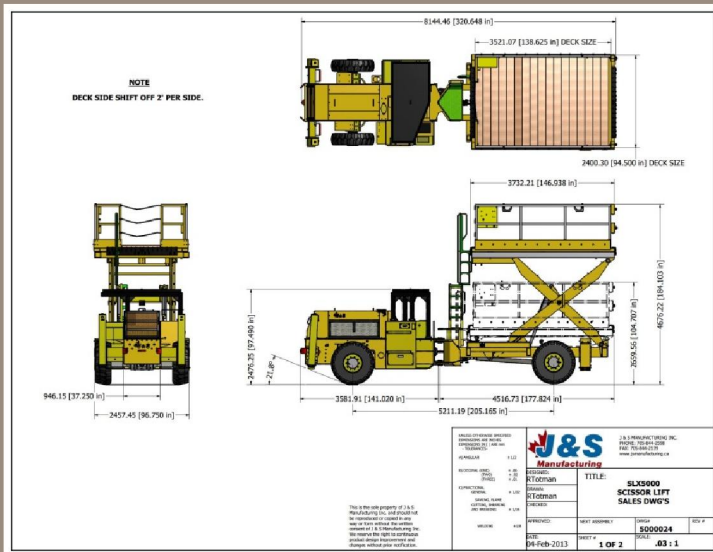
All hoses and fittings with SAE 37 deg JIC Aeroquip

EQUIPPED WITH

- Fire Suppression System Ansul 4 Nozzle
- ROPS/FOPS Canopy

AVAILABLE OPTIONS

- Clark Hurth 32,000 transmission
- Enclosed cab with A/C and heaters for cabs
- Wing filled or solid Tires
- Auto greasing system



EQUIPMENT
BUILT TO
PERFORM



www.waldenequipment.ca