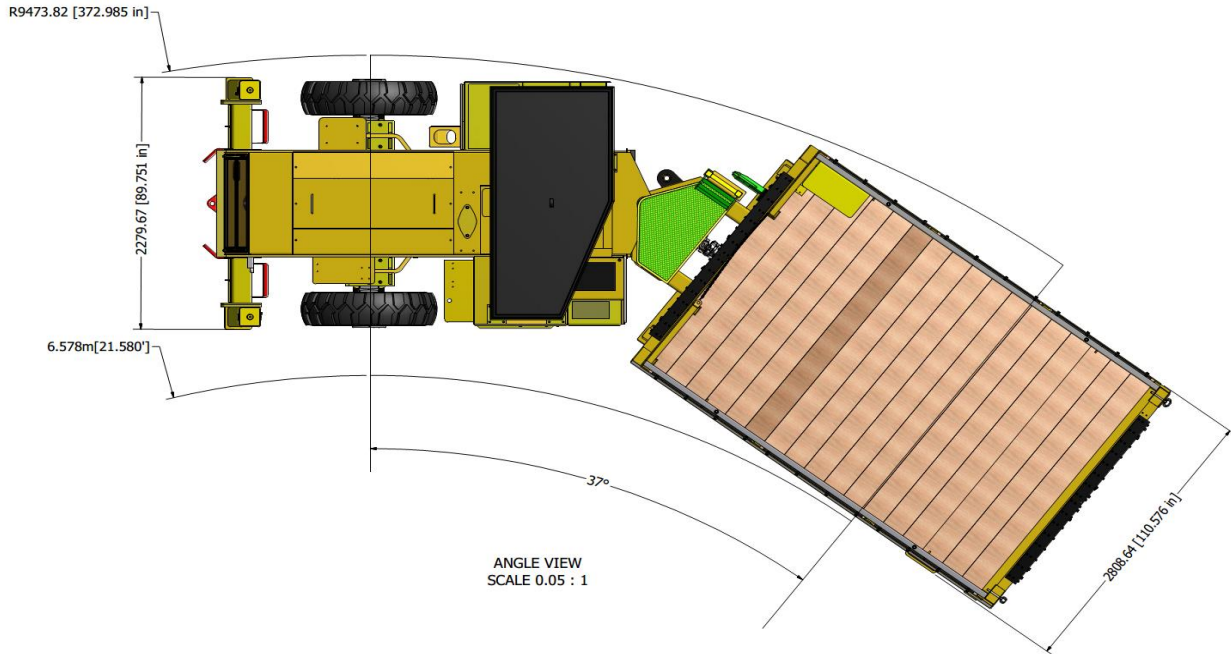
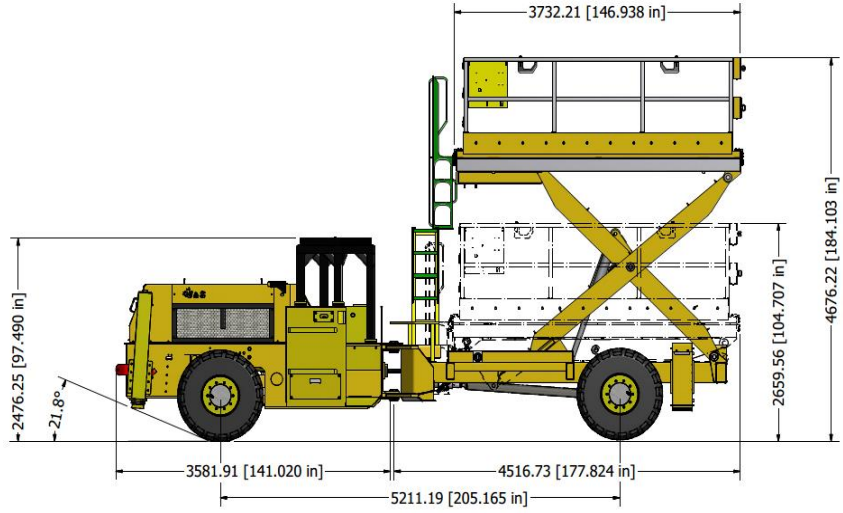
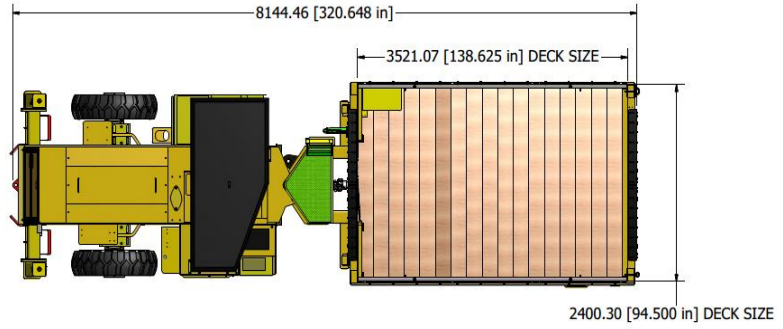




BUILT TO PERFORM

TECHNICAL SPECIFICATIONS		SLX 5100	
Engine		Dimensions Carrier	
Type	Mercedes	Length	319in
Model	904	Width	96in
Cylinders	In-Line 4	Height	104in
Exhaust	Exhaust Purifier		
Electrical	24 volt	Performance	
		1st Gear	3 km/h
Powertrain Transmission		2nd Gear	7 km/h
Transmission	Clark Hurth	3rd Gear	22 km/h
Series	T20000		
Gears forward	Three (3)	Weight	
Gears reverse	Three (3)	Net	34,000lbs
4 wheel drive	Yes		
		Carrier	
Axles (Dana 113)		Rops/Fops	Yes
Planetary Type	Yes	Passenger seat	Yes
Rear	Fixed	Fire Suppresion	Yes
Front	Oscillation	Lockable Master	Yes
		Safe Entry/exit 3 point	Yes
Brakes			
Service	4 Wheel Wet Disc	Additional Options	
Emergency	4 Wheel Wet Disc+Wet disc driveline	Engine	Mercedes 906, Cat, Cummings, Deutz A/C or heat
Park	4 Wheel Wet Disc+Wet disc driveline	Enclosed Cab	
		LED lights	24 volts
Scissor Platform		Lubrication system	Lincoln
Lifting Height	12 feet	Tool Compartement	Custom built
Deck Capacity	6000lbs	Fast Fuel System	Wiggins
Deck size	8 feet wide x 12 feet long	Compressor	Hydraulic driven
Side shift	24inches	Spare tire and rim	1200 x 20
Stabilizers	Hydraulic	Power Pack	Air over hydraulic
Ladder to Platfrom	Mechanical	Custom	Other custom-built options available
Diesel start/stop from platform	Optional		

NOTE
DECK SIDE SHIFT OFF 2' PER SIDE.



At JS Manufacturing, engineering is a process of continuous improvement: therefore, specifications are subject to change without notice.