

SLX

SCISSOR LIFT TRUCK



SLX6100

SCISSOR LIFT TRUCK

FEATURES

- Heavy duty frame construction providing a stable platform.
- Reliable and proven power train components with integrated torque converter
- 6000 lbs. lift capacity
- Four-wheel drive, articulated steer carrier.
- Operator and passenger suspension seats – come with seat belts.
- Spring applied hydraulic release parking and emergency brakes on both axles.
- Front and rear stabilizers
- Clear strobe light

ENGINE

Mercedes 904

TRANSMISSION

Clark 20,000 Series Power Shift Transmission

AXLES

Dana 113

TIRES

12:00 x 20 mine rated pneumatic tires

ELECTRICAL

24 volt electrical system

Electric limit switch to prevent movement of the vehicle when deck is extended.

EQUIPMENT

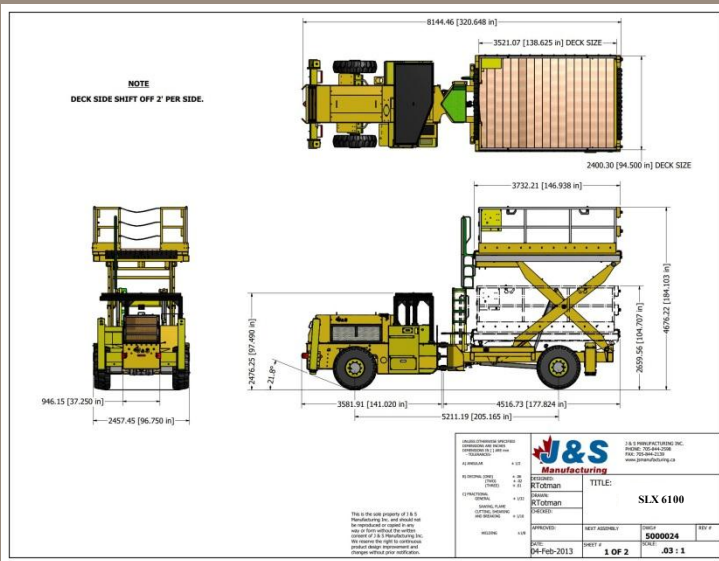
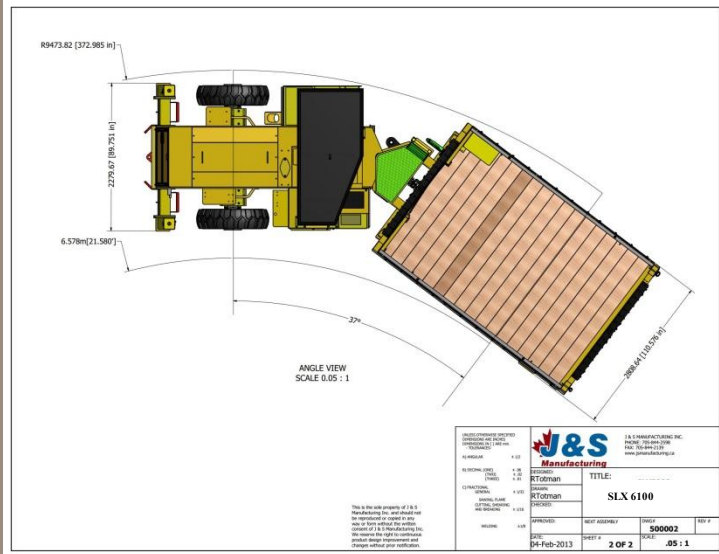
BUILT TO PERFORM



www.waldenequipment.ca

SLX

SCISSOR LIFT TRUCK



SLX6100

SCISSOR LIFT TRUCK

HYDRAULIC SYSTEM

All hoses and fittings with SAE 37 deg JIC Aeroquip

EQUIPPED WITH

- Fire Suppression System Ansul 4 Nozzle
- ROPS/FOPS Canopy

AVAILABLE OPTIONS

- Mercedes 906 / Cat / Cummins engines
- Clark Hurth 32,000 transmission
- Automatic lubrication systems
- Wing filled or solid tires
- Enclosed cab with A/C and heaters



EQUIPMENT
BUILT TO PERFORM



www.waldenequipment.ca