

SLX

SCISSOR LIFT TRUCK



SLX4100

SCISSOR LIFT TRUCK

FEATURES

- Heavy duty frame construction providing a stable platform.
- Reliable and proven power train components with integrated torque converter
- Four-wheel drive, articulated steer carrier.
- Operator seat come with seat belts.
- Spring applied hydraulic release parking and emergency brakes on both axles.
- Front and rear stabilizers
- Amber strobe light

ENGINE

Mercedes 904

TRANSMISSION

Clark 20,000 series power shift transmission

AXLES

Dana 123 Axles

TIRES

9:00 x 20 mine rated pneumatic tires

ELECTRICAL

24 volt electrical system

Electric limit switch to prevent movement of the vehicle when deck is extended.



EQUIPMENT

BUILT TO PERFORM

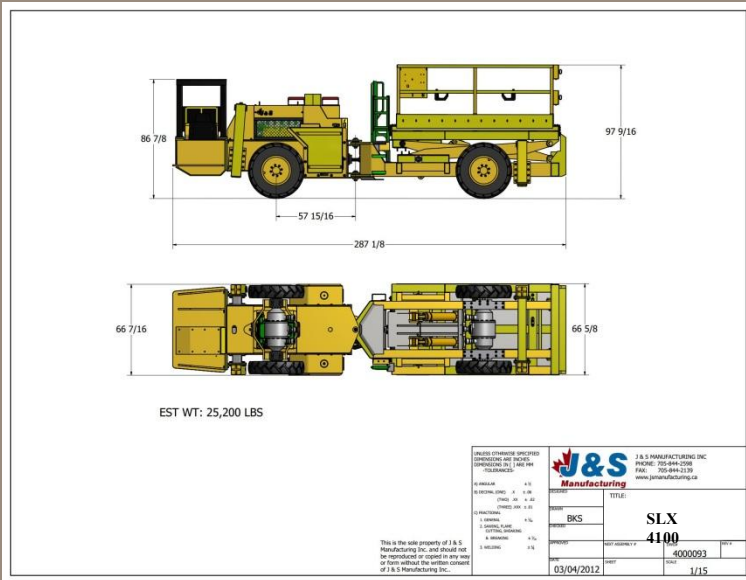


www.waldenequipment.ca



SLX

SCISSOR LIFT TRUCK



SLX4100

SCISSOR LIFT TRUCK

HYDRAULIC SYSTEM

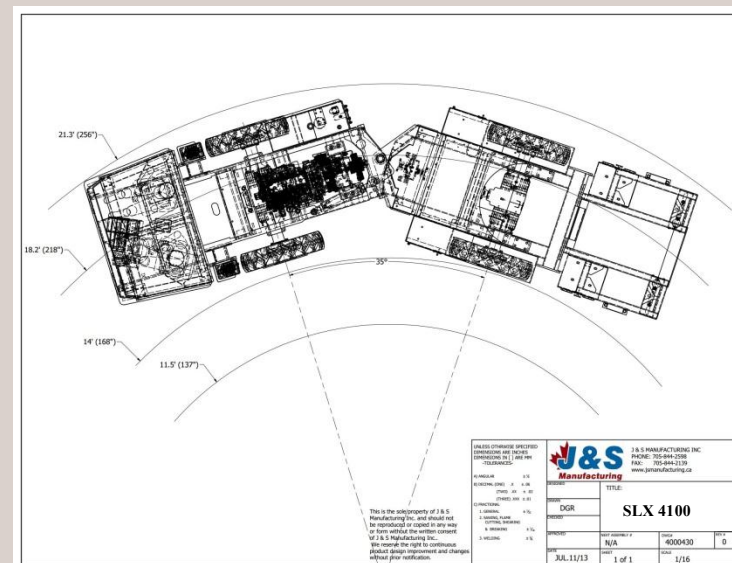
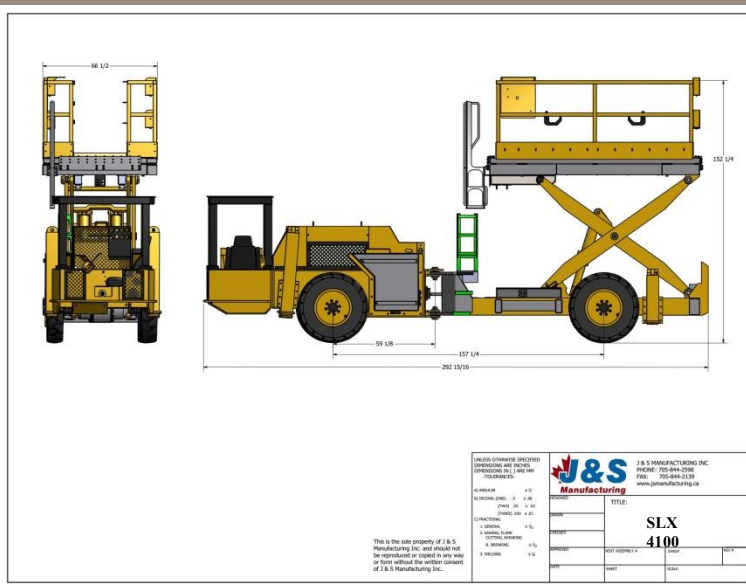
All hoses and fittings with SAE 37 deg JIC Aeroquip

EQUIPPED WITH

- Fire suppression system Ansul 4 nozzle
- ROPS / FOPS canopy
- 12" side shift

AVAILABLE OPTIONS

- Air Conditioners and heaters for cabs
- Lincoln Lube auto greasing system
- Enclosed cab with heating and air conditioning
- Wing filled or Solid Tires
- Deutz, CAT, Cummings engines available



EQUIPMENT

BUILT TO PERFORM

