

# BTX

BOOM TRUCK



## BTX5100

### BOOM TRUCK

#### FEATURES

- Heavy duty frame construction providing a stable platform.
- Reliable and proven power train components with integrated torque converter
- Four-wheel drive, articulated steer carrier.
- Operator and passenger suspension seats
- Spring applied hydraulic release parking and emergency brakes on both axles.
- Front stabilizers
- Clear strobe light
- Palfinger Boom **PALFINGER**

#### ENGINE

Mercedes 906

#### TRANSMISSION

Clark 32000 Series Power Shift Transmission

#### AXLES

Dana 113 Axles

#### TIRES

12:00 x 20 mine rated pneumatic tires

#### ELECTRICAL

24 volt electrical system

#### Unit Details

Unit Weight 24,000lbs

### EQUIPMENT

# BUILT TO PERFORM

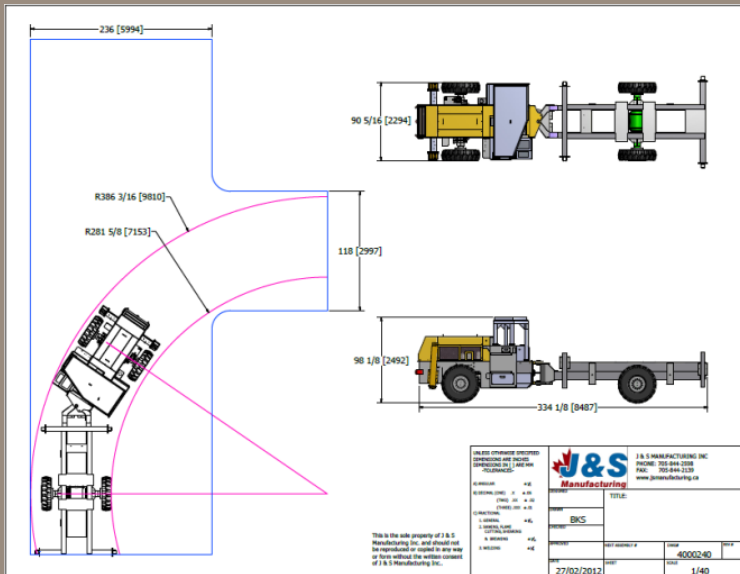
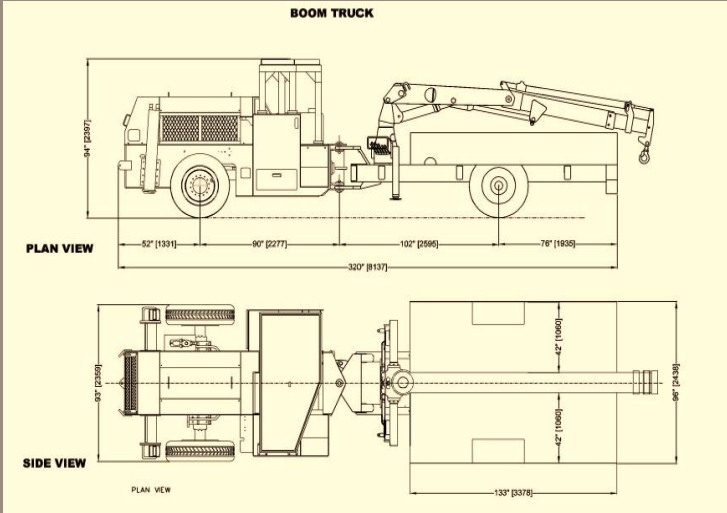


[www.waldenequipment.ca](http://www.waldenequipment.ca)



# BTX

BOOM TRUCK



## BTX5100

BOOM TRUCK

### HYDRAULIC SYSTEM

All hoses and fittings with SAE 37 deg JIC Aeroquip

### Deck

- 24,000lbs capacity
- 8' x 12' deck dimensions

### EQUIPPED WITH

- Fire suppression system Ansul 4 nozzle
- ROPS / FOPS canopy
- Lincoln Lube auto greasing system
- 1 operator and 2 passengers seats

### AVAILABLE OPTIONS

- Enclosed cab with AC
- Deutz, CAT, Cummings engines available
- Modified custom decks

EQUIPMENT

# BUILT TO PERFORM

