

SLX-PH

PIPE HANDLER



SLX-PH 5100

PIPE HANDLER TRUCK

FEATURES

- Heavy duty frame construction providing a stable platform.
- Reliable and proven power train components with integrated torque converter
- Four-wheel drive, articulated steer carrier.
- Operator and passenger suspension seats – come with seat belts.
- Spring applied hydraulic release parking and emergency brakes on both axles.
- Front and rear stabilizers
- Amber strobe light
- Palfinger Boom

ENGINE

Mercedes 904

TRANSMISSION

Clark 20,000 Series Power Shift Transmission

AXLES

Dana

TIRES

12:00 x 20 mine rated pneumatic tires

ELECTRICAL

24 volt electrical system

Electric limit switch to prevent movement of the vehicle when boom is extended

EQUIPMENT

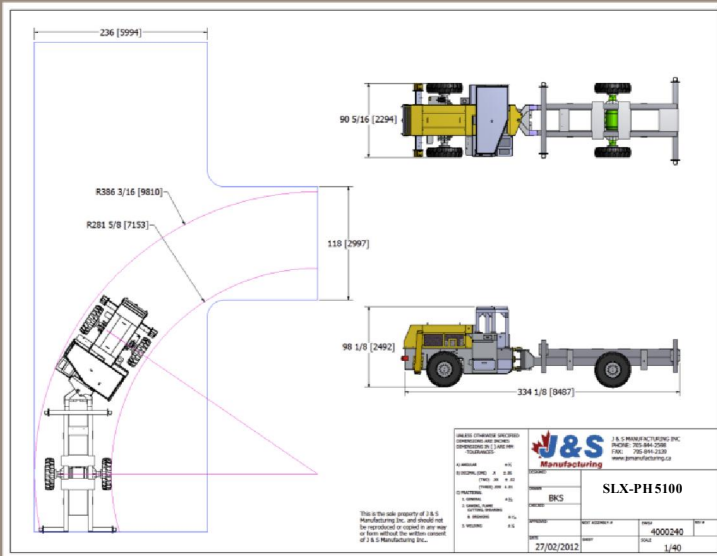
BUILT TO PERFORM



www.waldenequipment.ca

SLX-PH

PIPE HANDLER



SLX-PH 5100

PIPE HANDLER TRUCK

HYDRAULIC SYSTEM

All hoses and fittings with SAE 37 deg JIC Aeroquip

DECK

6 ft. X 12 ft. deck
24 inch side shift (working side only)
4000 lbs. lift capacity
Air over hydraulic power pack

BOOM AND HANDLER

Clamping capacity: 4" to 11.5" round pipe
Maximum load capacity – 1000 lbs.
Pipe manipulator weight – 435 lbs.
Removable boom tip for easy transition from crane hook to manipulator head
Forward tilt 45 °
Backward tilt 25°
Rotates 360 °
Palfinger boom with radio remote control for enhanced operation & safety

EQUIPPED WITH

- ROPS/FOPS canopy

AVAILABLE OPTIONS

- Mercedes 906 / Cat / Cummins engines
- Air conditioners and heaters for cabs
- Wing filled or solid tires
- Check fire system which includes 8 nozzles and two 30lbs tank
- Auto greasing system
- Enclosed cab with A/C
- Dana 113 axles

EQUIPMENT

BUILT TO PERFORM



www.waldenequipment.ca

